



# MATRIX PRODUCT OFFERINGS

MORE AT [WWW.DOWKEY.COM/MATRIX](http://WWW.DOWKEY.COM/MATRIX)



## CUSTOM INTEGRATIONS

Our ability to design, develop and manufacture, enables us to provide customized solutions to meet all types of signal switching needs at a reasonable cost. We offer a variety of high-performance RF matrix systems including electromechanical, solid state, fiber optics or hybrid solutions. Dow-Key is considered the ideal choice for ATE, SATCOM and Space applications.



## MULTIPLE SWITCH



The MS-Series is a matrix solution populated with individual switches to allow the user to control multiple coaxial switches easily through software. It gives the user the flexibility to add as many switches as needed (limited to the size of the enclosure) on the rear panel or inside the box starting with a 19" 1RU chassis up to 4RU (and larger enclosures for custom designs). Switches can be mixed & matched.



## MULTIPLEXER

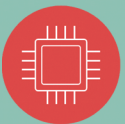
The MP-Series is a matrix solution with the capability to switch one input to as many as 143 outputs. The input/output ports are bidirectional.



## CROSSBAR



For more complex test setups and signal switching, the CB-Series crossbar matrix is an excellent choice. It allows testing of multiple UUT/DUT (units/devices under test) with many input/output signals or high speed communication buses without having to connect and disconnect them from the setup. A crossbar system can route any input signal to any output port such that the path between the I/O ports is unique at any given time.



## SOLID STATE SOLUTIONS

As a full solid state fan-out matrix, the input RF signals are amplified and divided across every output such that each input signal can be switched to all output ports simultaneously.

