

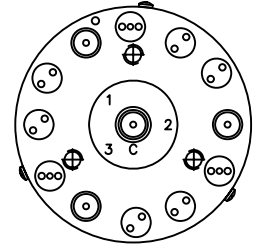
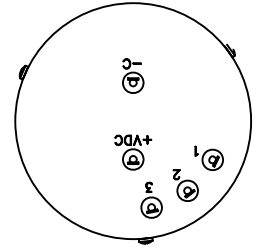
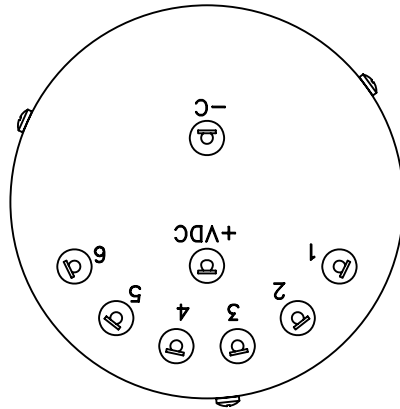


REVISIONS			
REV.	DESCRIPTION	DATE	APPROVED
A	PRODUCTION RELEASE	4/27/06	J.S.
B	REVISED PER ECO #8843	12/7/06	K.R.

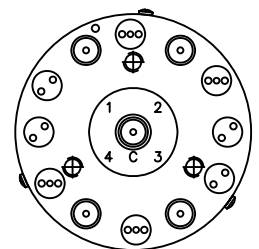
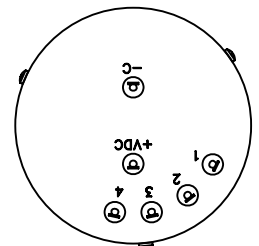
Nominal Coil Voltage	Part Number		
	SP3T	SP4T	SP6T
12 Vdc	431-520803A	441-520803A	461-520803A
15 Vdc	431-590803A	441-590803A	461-590803A
24 Vdc	431-580803A	441-580803A	461-580803A
28 Vdc	431-530803A	441-530803A	461-530803A

REVISIONS	B	B	A				 <b>DowKey<sup>®</sup> Microwave CORPORATION</b>	4822 McGrath Street Ventura, CA. 93003-5641 PH: (805) 650-0260 FAX: (805) 650-1734
SHEET NO.	1	2	3					
APPROVALS			DATE					SWITCH, 3-6 POSITION, NORMALLY OPEN, SMA-FEMALE CONNECTORS, 50 OHM [2W] TERM., TTL-HI CONTROL CIRCUIT
DRAWN S. LEE			4/7/06					
ENG G. NICKLAUS			4/10/06				CODE IDENT. NO. 00471	DWG. NO. 4X1-5X0803A
ENG. MGR. R. SZNUK			4/30/06					
SALES MGR. V. HARTER			4/21/06				SCALE NONE	FINAL ASSY:
Q.A. MGR. R. MATSUMOTO			4/13/06					
MFG. MGR. R. GONZALEZ			4/10/06				SHEET 1 OF 3	

OUTLINE DRAWING:



3 POSITION



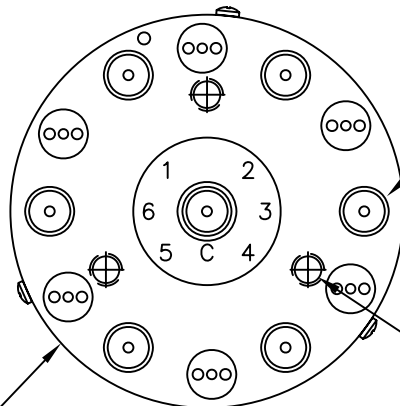
4 POSITION

.31 [7.9] MAX

2.70  
[68.6]  
MAX

.29  
[7.4]

IDENTIFICATION  
MARKING



7X SMA-FEMALE CONN.  
6X EQ. SPACED ON  
Ø1.600 [40.6] B.C.

3X #8-32UNC-2B X  $\nabla$ .25,  
EQUALLY SPACED ON  
Ø1.187 [30.1] B.C.

Ø2.00 [50.8]

[ ] MILLIMETERS

UNLESS OTHERWISE SPECIFIED TOLERANCES ARE: .XXX ±.010 ANGLES: ±3° .XX ±.030	CODE IDENT. NO. 00471	DWG. NO. 4X1-5X0803A	REV. B
	SCALE NONE	SHEET 2 OF 3	

## SPECIFICATIONS:

### 1. RF CHARACTERISTICS:

1.1 FREQUENCY (GHz):	DC-4	4-8	8-12.4	12.4-18
1.2 VSWR (RATIO MAX):	1.20:1	1.30:1	1.40:1	1.50:1
1.3 INSERTION LOSS (dB MAX):	0.20	0.30	0.40	0.50
1.4 ISOLATION (dB MIN):	80	70	65	60
1.5 RF POWER (WATTS CW MAX):	100	50	35	25

### 2. ACTUATION DATA:

2.1

NOMINAL VOLTAGE	OPERATING VOLTAGE	CURRENT (TYP) @ NOMINAL VOLTAGE & 25°C
12	11-14	345mA
15	13-17	300mA
24	20-28	200mA
28	24-32	160mA

2.2 SWITCHING TIME: 15ms MAX.  
 2.3 OPERATING MODE: NORMALLY OPEN, TTL-HI CONTROL CIRCUIT  
 2.4 TTL CURRENT OFF (0-0.8Vdc): 0mA @ 0 Vdc  
 2.5 TTL CURRENT ON (2.4-5.5Vdc): 1.35mA MAX @ 3.85 Vdc

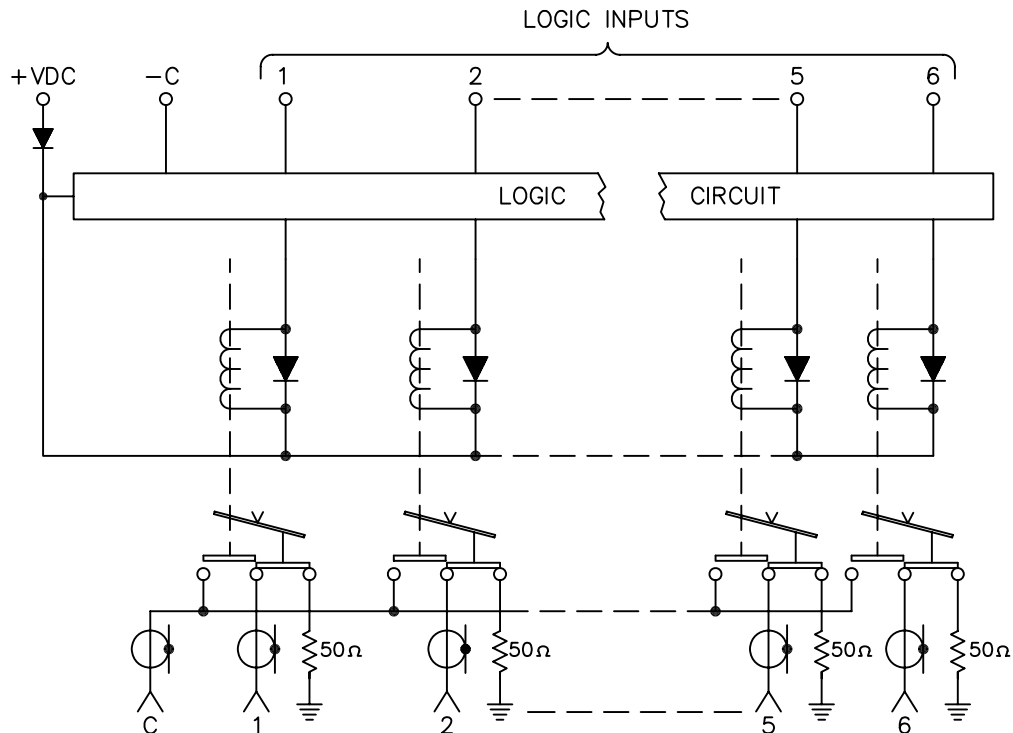
### 3. MECHANICAL:

3.1 RF CONTACTS: BREAK BEFORE MAKE  
 3.2 WEIGHT: 10oz. (275g.) NOMINAL  
 3.3 DESIGN LIFE: 1,000,000 CYCLES MIN

### 4. ENVIRONMENTAL:

4.1 OPERATING TEMPERATURE: -25°C TO +65°C  
 4.2 STORAGE TEMPERATURE: -55°C TO +85°C  
 4.3 SEAL: SAND AND DUST

## SCHMATIC:



SCHEMATIC SHOWN IN NORMALLY OPEN POSITION.

CODE IDENT. NO. 00471	DWG. NO. 4X1-5X0803A	REV. A
SCALE NONE	SHEET 3 OF 3	