

WSA-00183 MMDS TTLNA

◆ Features:

- Full Duplex Configuration
- Pseudo-Elliptic Filter Configurations for Low Loss and High Rejection
- Ultra-Low Noise Figure - < 2.0 dB Typical
- Automatic Bypass Under Soft/Hard Fail Conditions
- +10V to +15V Operating Voltage Via Bias Tee on BTS Cable Center Contact
- Integrated Assembly-to-BTS Lightning Protection

◆ Specifications:

Receive Path Specifications:

Receive Passband:	2500 to 2566 MHz
LNA Construction:	Single stage, two-branch quadrature, balanced
Gain:	15 dB typical
Noise Figure:	<2.0 dB typical, 2.3 dB max.
Passband Return Loss:	15 dB min.
Input IP3:	+13 dBm min. +15 dBm typical +17 dBm non-destructive
Maximum Input Power:	
Receive Preselect Attenuation: (relative to passband)	
DC to 2300 MHz	-70 dBc min.
2620 to 2686 MHz	-75 dBc min.
Alarm Modes:	
Supply Voltage <+9.5 VDC	LNA bypass mode
One-Branch Failure	LNA active mode (w/degradation)
Two-Branch Failure	LNA bypass mode
Insertion Loss in Bypass Mode:	2.5 dB max.

Transmit Specifications:

Transmit Passband:	2620 to 2686 MHz
Passband Insertion Loss:	0.5 dB max.
Passband Return Loss:	15 dB min.
Transmit Filter Attenuation: 2500-2566 MHz	-40 dBc min.
Passband Power Handling:	
Average	50 watts
Peak Instantaneous	1000 watts



Assembly Specifications:

TTLNA Configuration:	Full duplex
Characteristic Impedance:	50 ohms
Power Supply: Voltage	+10VDC to +15 VDC via bias tee-center BTS connector
Current	
Normal Operation	160 mA typical
One-Branch Failure	310 mA typical
Two-Branch Failure	100 mA typical
Dimensions: (excluding mounting brackets & connectors)	8.64" x 7.25" x 3.5" 219.5mm x 184.2mm x 89mm)
Connectors:	7/16-F
Surge Suppression:	
Antenna Port	14 AWG DC ground
BTS Port	Per IEC 1000-4-5 8/20uS @ 20 kA 10/350uS @ 5 kA
Housing:	Aluminum, silver plated
Weight:	12 LBS (inc. mtg. brackets)
Environmental:	Per IP65
Exterior Finish:	Gray polyurethane paint Per RAL7035
Wind Loading:	10 lbs @ 100 mph
Temperature Range:	
Operational	-40°C to +60°C
Storage	-40°C to +85°C
Calculated MTBF:	> 200,000 hours
Mounting: Brackets	Accommodate pole diameters 1.5" to 4.5" Clamping range 3.5" to 5.5" (others available)
Clamps	

Filtering Solutions for Your Global Market

USA

Phone: 410-749-2424
FAX: 410-749-5725
Email: sales@klmicrowave.com

EUROPE

Phone: +44-(0)-1908-547920
FAX: +44-(0)-1908-695284
Email: sales@kleurope.com

Order On-Line @ www.klmicrowave.com

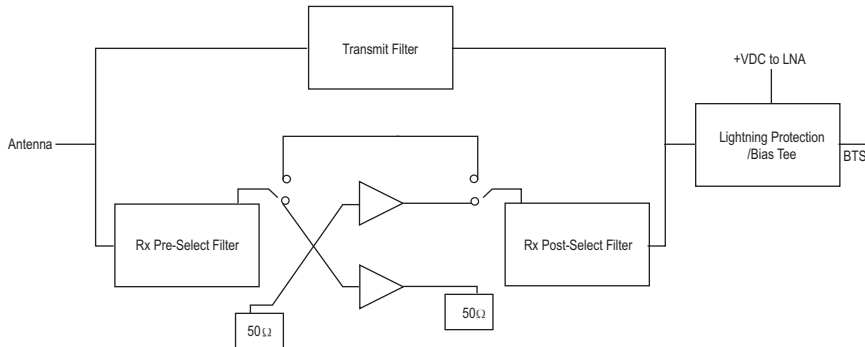


WSA-00183 MMDS TTLNA

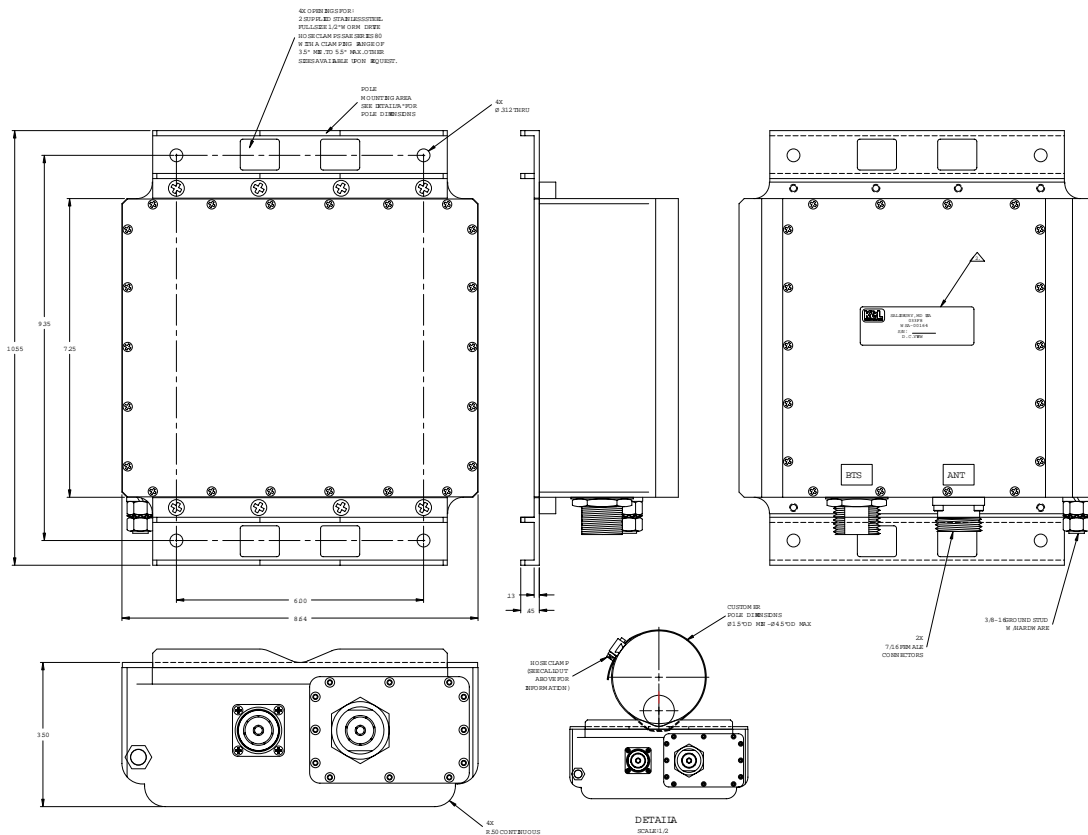
◆ Applications:

- Outdoor Installation on Tower-to-Enhance Uplink in Cellular Systems

◆ Block Diagram:



◆ Outline Drawing:



Filtering Solutions for Your Global Market

USA
 Phone: 410-749-2424
 FAX: 410-749-5725
 Email: sales@klmicrowave.com

EUROPE
 Phone: +44-(0)-1908-547920
 FAX: +44-(0)-1908-695284
 Email: sales@kleurope.com

Order On-Line @ www.klmicrowave.com

