

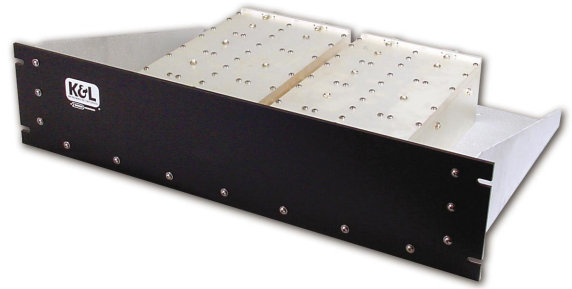
WSN-00112/WSA-00140 — SMR 851-866 MHz Notch Filter

◆ Features:

- Specific Design for A-Side Service Providers
- Elliptic Response Design; Sharp Roll-off
- High Rejection; >40 dB @ 851 MHz
- Low Loss; 0.5 dB Typical @ 846.5 MHz
- Single Sector Assembly Model Available
- High Passband Power Handling



**WSN-00112
Notch Filter**



**WSA-00140 Dual
Notch Rack Assembly**

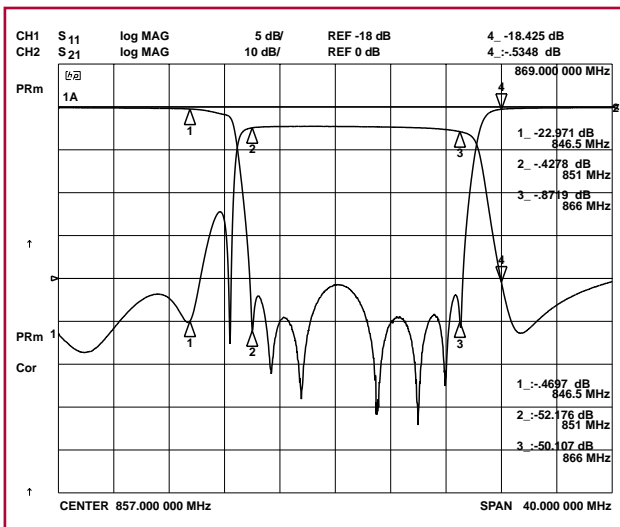
◆ Specifications:

Passbands:	DC-846.5 MHz 869-891.5 MHz
Passband Insertion Loss:	
DC-846.5 MHz:	0.65 dB maximum
869-891.5 MHz:	0.65 dB maximum
Passband Return Loss:	15 dB minimum
Rejection:	
851-866 MHz:	37 dB minimum
869-891.5 MHz Power Handling:	
CW	500 watts
Peak Instantaneous	10,000 watts

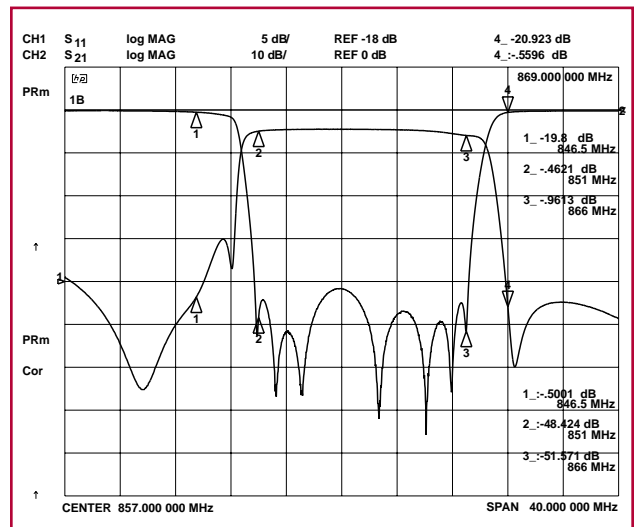
Dimensions:	12.78" x 7.25" x 3.5" (324.6 x 184.2 x 88.9mm)
Weight:	12.5 lbs. nominal
Connectors:	N - F
Operating Temperature:	-10 to +65°C
Storage Temperature:	-40 to +85°C
Operating Humidity:	0 to 90%, non condensing
Single Sector Assembly:	WSA-00140 (Dual Notch Filters)
Dimensions:	23" Rack x 3U H x 15.27" Deep (584.2 x 3U x 387.9mm)
Weight:	31 lbs. nominal
Connectors:	N-F (Rear Chassis Accessible)

◆ Applications:

- SMR/ESMR Rejection for Macrocell A-band Providers
- Can Be Used In Receive Only or Duplexed Systems



S₁₁ & S₂₁ Response Filter 1A



S₁₁ & S₂₁ Response Filter 1B

Filtering Solutions for Your Global Market

USA
Phone: 410-749-2424
FAX: 410-749-5725
Email: sales@klmicrowave.com

EUROPE
Phone: +44-(0)-1908-224746
FAX: +44-(0)-1908-224749
Email: sales@kleurope.com



Order On-Line @ www.klmicrowave.com